

12/12/2025

Oxhey Newsletter



A message from Mrs Proffitt.....

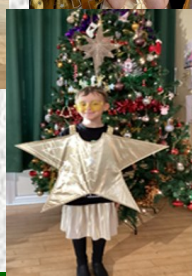


Nativity Week – A Sparkling Success!

What an incredible week we've had celebrating our nativities! The children were absolute stars, dazzling us with sensational singing, lively dancing and confident speaking. From glittering stars and glorious angels to Mary, Joseph, the Kings, shepherds, funky camels and plenty of sheep – the performances had it all! Thank you for your support with costumes; they were fantastic, and the joy on stage was an absolute pleasure to see. A huge thank you to everyone who joined us to share these special moments, and an even bigger well done to our amazing children and staff – your hard work really paid off. These performances are a wonderful reminder of the very special memories we create together at this magical time of year. Well done everyone!

Have a lovely weekend,

Mrs. Proffitt and the Oxhey Team.



Diary Dates

Class Christmas Party Week
w/c 15th December

Pupil Christmas Lunch & Christmas jumper day

17th December



KS2 Carol Concert—
St Lawrence Church 1.30pm
18th December

Last day of term & class party day

19th December

School re-opens
5th January



Pantomime in school
A Christmas Carol
8th January

Faith in Focus week
W/C 26th January

Young Voices
5th February

NSPCC Number Day
6th February

Children's Mental Health Week
W/C9th February

Spring Parents Evening
10th February

Class	Attendance
Sparkly Spiders	97%
Dazzling Dragonflies	94%
Terrific Turtles	98%
Perfect Pandas	99%
Amazing Alligators	99%
Marvellous Meerkats	98%
Outstanding Owls	100%
Fabulous Foxes	97%

Our whole school attendance target is 96.4%.
This week, our school attendance was 97.72%

School Matters!



Attend Today, Achieve Tomorrow

Governor Update

We would like to extend our heartfelt thanks to Mr. Alan Rogers for his long-standing service and unwavering dedication to our Local Advisory Board. His commitment and support have been invaluable in shaping the success of our school community. Many thanks.

At the same time, we are delighted to welcome two new governors to our Local Advisory Board; Mr Guy Baxendale and Miss Dionne Timony. Both Guy and Dionne bring a wealth of educational expertise and knowledge, which will be instrumental in guiding our continued growth and development. We look forward to working closely with them as we strive to provide the very best for our pupils.



A Huge Thank You from the PTFA!

We would like to say a huge thank you to everyone who has kindly bought raffle tickets to be in with a chance of winning one of the fabulous Christmas hampers. If you haven't yet bought a raffle ticket, and wish to buy one, you can still purchase a raffle ticket next week (£1.00 per strip) by sending the correct money into school in a named envelope. Thank you! The raffle will be drawn on Wednesday 17th December and we'll get in touch with the lucky winners so you can take your hamper home to enjoy over the Christmas holidays

Reception Application

If your child is due to start Reception in September 2026, please be aware that applications open on 1 November 2025 and must be submitted by 15 January 2026.

Applications are made online through the Staffordshire County Council's admissions portal. Please ensure you apply within this timeframe, as late applications may affect your chance of securing a place at your preferred school.

National Offer Day will be on 16 April 2026 when you will be notified of your child's allocated school.

ParentPay

Please could all parents and carers check their ParentPay accounts for any outstanding balances. We kindly ask that these are cleared, or that small payments are made regularly to help reduce any remaining amounts. Thank you.

Year 4 Visit to Woodhouse

Our Year 4 pupils had a fantastic visit to Woodhouse Academy today, where they enjoyed a morning packed with exciting learning experiences! They took part in baking shortbread and even got the chance to play African drums, exploring rhythm and culture. A huge thank you to the staff at Woodhouse for hosting such a wonderful and enriching morning – the children came back buzzing with enthusiasm and new knowledge!

Supporting Young People's Mental Health with The Staffordshire Health App Finder.



Young people today face increasing mental health challenges, and sometimes, finding trusted, effective support can feel overwhelming. [The Staffordshire Health App Finder](#) is a free digital tool, that young people, parents/carers, families and professionals can use to find expert-reviewed, trusted and effective health apps. The Staffordshire Health App Finder can support young people, and those who support young people, to find safe and reliable digital mental health and emotional wellbeing support in one place. This easy-to-use tool helps families, schools, and young individuals discover a range of trusted, clinically-reviewed apps to address a variety of needs – whether it's managing anxiety, building resilience, or coping with everyday stress. You can use the search button to explore the apps for children, young people and families, maintaining a healthy weight, adult mental health, stopping smoking and much more:

A Friday Challenge...

Each week, I'll share a couple of **Bebras Challenges** which promote children's **computational thinking** and **problem-solving skills**. Why not support your child to complete a challenge each week and you'll be helping them to develop logical and algorithmic thinking skills, as well as introducing them to some new computer science concepts.

Task Difficulty

The difficulty of the task on each card is indicated by the icon in the bottom right-hand corner.

- = Easy
- = Medium
- ★ = Hard

Algorithms

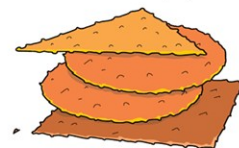


Robot and cookies

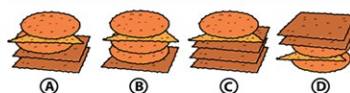
7

A robot recognises several geometric shaped cookies: square, circle and triangle. We are going to mark them with S, C and T.

The robot knows a command PUT – puts a cookie on another one. When the robot finishes the commands PUT S PUT C PUT C PUT T, a pile of cookies looks like this:



What will the pile of cookies look like when the robot finishes the commands: PUT S PUT S PUT C PUT T PUT C?



Logic



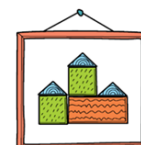
Picture of the castle

24

A little beaver, Lina uses an exciting method to create pictures. She cuts out a stencil of the castle in a cardboard panel. Then she places colourful bricks in it.



Lina created this picture:



In how many different ways is it possible to create this picture?



In the spotlight this week



Zones of Regulation at Oxhey First School

In order to promote wellness, support our pupils to identify and understand their emotions and practice ways of successfully self-regulating their behaviours, we have recently introduced the 'Zones of Regulation' at Oxhey. The Zones of Regulation are an emotional literacy framework which categorises a range of emotions into different coloured groups or zones. It is recognised that all emotions are valid and it is not wrong to experience any of them. Our behaviour responses to our emotions, however, are not always positive. We wish to educate our pupils on how to identify these difficult emotions in particular, so that strategies or 'toolkits' can be put in place to enable them to return to the Green Zone, a state of calm, happiness and readiness to learn.



Every classroom throughout the school has a display of each of the zones and pupils are encouraged to consider them on a daily basis. The Zones of Regulation resources can be used to support your child at home too, to identify and describe their feelings. Discussions around why they are feeling a certain way and what strategies can be used when they feel like this can then be had. The Zones of Regulation resources also support your child to think about the feelings and thoughts of others, the size of problems and appropriate reactions as well as expected and unexpected behaviours in different situations.

The ultimate aim of this is to provide a consistent home-school language which promotes independence in identifying and expressing their feelings, choosing strategies to prevent dysregulation and promoting positive behaviour choices.

The Zones of Regulation were developed by Leah Kuypers MA ED., OTR/L. More information can be found at <http://www.zonesofregulation.com/index.htm>

WOW Awards



#WakeUpWednesday



Wake up Wednesday Link

With Christmas right around the corner, millions of families are excitedly anticipating the chance to spend some quality time with each other over the festive season. When everyone's engrossed in their phones or glued to their games consoles, however, genuinely meaningful moments with loved ones can often be difficult to orchestrate. This guide lends a hand: providing some advice on helping young people to set aside their devices for a while and live in the moment. Even if going full tech cold turkey feels unrealistic, implementing just a few of these tips could still decrease the amount of screen time in your home this festive season – enabling everyone to make the most of it.

<https://nationalcollege.com/guides/12-top-tips-for-children-and-young-people-to-enjoy-a-tech-free-christmas>

KEY DATES FOR DECEMBER

Class Christmas Party Week	W.B 15/12/25
Fabulous Foxes Reports Home	15/12/25
Santa visiting Oxhey (Rotary Club)	16/12/25
Christmas Dinner Day & Christmas Jumper Day	17/12/25
Fabulous Foxes Parents Evening	17/12/25
Autumn Term Reports Home	17/12/25
KS2 Carol Concert at St. Lawrence Church (Concert for Parents 1:30 - 2:30)	18/12/25
Finish for Christmas	19/12/25

KEY DATES FOR JANUARY

SCHOOL OPENS 05/01/26

Pantomime in School	08/01/26
Faith in Focus Week	W.B 26/01/26



Notice Board



CHRISTMAS CRACKER

HOLIDAY CLUB

FREE PLACES

KINGSFIELD FIRST SCHOOL
Gunn Street, Biddulph, ST8 6AY

1 DECEMBER 22-23 2 DECEMBER 29-30 HALF DAY 09:00-13:00

We are excited to welcome you all to our action-packed holiday club throughout the Christmas period. Our program of sports, games, crafts and special events will give every child an unforgettable experience that will live long in the memory.

**MULTI-SPORTS • SPECIAL EVENTS • GAMES
ARTS & CRAFTS • INFLATABLES • COMPETITIONS**

123

HAF CODE

Access this through contacting admin at your school.

REGISTER

Login to the EEQU website to register your child's details.

BOOK

Locate your venue on the EEQU website to secure a place.

HOLIDAY ACTIVITIES AND FOOD

This program provides children who are eligible for free school meals with the opportunity to access physical activity, alongside receiving snacks, a nutritious lunch and drinks.

SCAN HERE 

NAME _____ HAF CODE _____

For more information:
Call: 01782 366332 Website: asmsports.co.uk

Stay Well Prescription



FREE Mental Health Service for young people ages 5-18 years in Staffordshire
(upto 25 with SEND or careleavers)



Who can refer?

- Self Refer
- Parents/Carers
- GP's & Professionals

Scan Me



Call: 01782 418518 *option 2 or 3*
Email: staywellcypstaffs@changes.org.uk
Visit: staffs.staywellcyp.org

CAUDWELL CHILDREN

Empowering Disabled & Neurodivergent Children

ABOUT US

We champion every kind of potential in disabled and neurodivergent children by truly listening and understanding.

Every child is different, that's why we offer personalised practical and emotional support. We're here to listen, support and help find the right path for your family.

Chat with your local SEND Support Team at community hubs across Staffordshire.

Who can visit us?

- Parents and carers of disabled and/or autistic children
- Health, education, and care professionals
- Anyone looking to learn more about Caudwell Children's services




Our SEND Support Team will be at Staffordshire Moorlands Family Hub

ST8 6DT on the following dates. Drop in so no booking required

9:30am—12:30pm
14th & 28th January,
11th & 25th February
11th & 25th March



SPORTS COACHING GROUP INVITES YOU

FREE

CHRISTMAS SPORTS & ACTIVITIES HOLIDAY CLUB

22ND, 23RD, 24TH DECEMBER & 2ND JANUARY
BIDDULPH YOUTH AND COMMUNITY ZONE, ST8 6NE
10AM - 2PM

HOT LUNCH INCLUDED | SPORTS | CRAFTS | AGES 5-13 YEARS | PART OF THE STAFFORDSHIRE HAF PROGRAM | AVAILABLE FOR THOSE WHO RECEIVE INCOME RELATED MEALS

PAID SPACES AVAILABLE FOR THOSE NOT ELIGIBLE FOR HAF, AT ONLY £15 INCLUDING LUNCH

HOW TO BOOK:
Book via Sports Coaching Group website, Or click [HERE](#)

01270 449770

RAISING MONEY FOR CHERISH THE CHILDREN - LAKES IN KENYA 2026

CHRISTMAS FAYRE


BIDDULPH YOUTH AND COMMUNITY ZONE
Church Road, Biddulph, ST8 6NE

SUNDAY 14TH DECEMBER 12PM-3PM

WHAT'S ON?

Personalised gifts • Cakes • Dog cakes • Jewellery • Arts & crafts
Knitted, sewn & embroidered items • Christmas decorations • Home Fragrance
Bags • Cookies & biscuits • Brownies • Fudge • Cards
Stationery • Face paint & glitter • Toys • Sweets • Tropic and Avon
Candy floss & popcorn • Wax melts and candles • Pet stall • Wreaths
Handcrafted and engraved items • Cushions • Hats • Hair accessories
Jewels and crystals • Food & drink stalls • Resin creations
Tombola & Raffle • Meet Santa! • Hair tinsel • Vinyl records
Photography prints • Usbourne Books • Balloons
... and so much more!

★ Come along for festive shopping, family fun, and Christmas cheer! ★



NEW VIC Education

TALE TRAIL TO THE LITTLE MERMAID


Join us on a magical adventure under the sea!

As part of the Holiday Activities and Food Programme (HAF), we are inviting children ages 5-8 who are eligible for benefit-related free school meals to come along to a performance of *Tale Trail to The Little Mermaid* and take part in an exciting story-based workshop after the show!

Bookings are now open. For the full information about the event and to book your tickets, visit the website via the link below or scan the QR code to book on a mobile device.

<https://eequ.org/book/new-vic-tale-trail-to-the-little-mermaid-with-new-vic-theatre-education-21572>

Contact us: pharrison@newvictheatre.org.uk / 02782 381366



CFLP School Term and Holiday Dates 2025/2026

Autumn Term 2025

INSET DAYS 1 AND 2: Monday 1st & Tuesday 2nd September 2025 (Staff only)

Pupils: Wednesday 3rd September - Friday 24th October

October Half Term Holiday: Monday 27th October - Friday 31st October

INSET DAY 3 Monday 3rd November (Staff only)

Staff and Pupils: Tuesday 4th November - Friday 19 December

Christmas Holiday: Monday 22nd December - Friday 2nd January 2026

Spring Term 2026

Staff and Pupils: Monday 5th January 2026 - Friday 13th February

February Half Term: Monday 16th February - Friday 20th February

Pupils: Monday 23rd February - Friday 27th March

Easter Holiday: Monday 30th March - Friday 10th April

Summer Term 2026

Staff and Pupils: Monday 13th April - Friday 22nd May

May Bank Holiday - School Closed: Monday 4th May

Half term: Monday 25th May - Friday 29th May

INSET DAY 4: Monday 1st June (Staff only)

Pupils: Tuesday 2nd June - Friday 17th July

INSET DAY 5- Monday 20th July (Staff only) Taken as Twilights

Summer Holiday for pupils: Monday 20th July -Monday 31st August 2026

ATTENDANCE

WHAT THE NEW RULES MEAN FOR ME

1

I'm a single parent of one child and we want to go on holiday for a week.

Your holiday will not be authorised and you must talk to the school before you book anything. Because your child will miss 5 school days you will be given a penalty notice fine. The fine is £160 but if you pay it in 21 days it will be reduced to £80.

£160



2

FOR EVERY CHILD A PENALTY IS GIVEN.



+ £160 + £160 + £160 + £160

4 children & 1 parent = £640

Reduced to £320 if paid in 21 days

IRREGULAR ATTENDANCE

10 IN 10

5

If your child is absent for 10 or more sessions in 10 weeks and their absences are unauthorised. The school will consider prosecution.

1 Day = **2** Sessions

3

FOR A FAMILY OF TWO PARENTS



+ £160 + £160 + £160 + £160

4 children & 2 parents =

£1280

Reduced to £640 if paid in 21 days

If in any period of not more than 3 years, your child has a 2nd and 3rd leave of absence or pattern of irregular attendance...

4

2ND TIME

2 parents and

1 child = £320

2 children = 640

3 children = 960

4 children = 1280

No discount for early payment



3RD TIME

A penalty notice fine will not be given. Instead, your case will be taken to court.

A magistrate can fine each parent £2500 for each child

1 parent & 4 children = £10,000

2 parents & 4 children = £20,000