

28/11/2025

# Oxhey Newsletter



## A message from Mrs Proffitt.....

As we move into December next week, the school is buzzing with excitement in the run-up to Christmas! It's always such a very special time. The Christmas tree is up and looking beautiful in the hall; thank you to Tiger Club for their fantastic work! The stage is ready, and rehearsals are well underway for our Early Years and Key Stage 1 nativities. The singing sounds absolutely amazing! Class parties are planned, Christmas dinner is on order, and St. Lawrence's church is booked for our Key Stage 2 Carol Concert on the 18th December. We can't wait to celebrate this magical season together! The PTFA are holding a non-uniform day on Friday 5<sup>th</sup> December in exchange for a hamper item – a bottle, chocolates, smellies, items unused and in date, please. To be in with a chance to win a hamper, raffle tickets will be available to purchase through the office from Monday 1<sup>st</sup> December. (£1.00 per strip) Please send correct money in an envelope which clearly states your child's name and class. Many thanks for your continued support. We've also got an exciting festive challenge for everyone starting on Monday! Ten cheeky elves have been hidden around our school building, and they're waiting to be discovered. If you spot one, you'll receive a special prize delivered straight from the North Pole by Santa's team of elves! Keep your eyes peeled!

Enjoy the weekend,

Mrs. Proffitt and the Oxhey Team.

Class	Attendance
Sparkly Spiders	96%
Dazzling Dragonflies	92%
Terrific Turtles	93%
Perfect Pandas	89%
Amazing Alligators	100%
Marvellous Meerkats	98%
Outstanding Owls	98%
Fabulous Foxes	96%

Our whole school attendance target is 96.4%.  
This week, our school attendance was 96%



## Diary Dates

**Dress rehearsal  
(pupils only)  
8th December**

**EYFS morning performance  
(9.30am)  
9th December**

**KS1 AM performance  
(9.30am)  
10th December**

**EYFS PM Performance  
(2.15pm)  
10th December**

**KS1 PM Performance  
(2.00pm)  
11th December**

**KS1 Evening Performance  
(6pm)  
11th December**

**Class Christmas  
Party Week  
w/c 15th December**

**Pupil Christmas  
Lunch  
17th December**

**KS2 Carol Concert—  
St Lawrence Church 1.30pm  
18th December**

**Last day of term  
19th December**



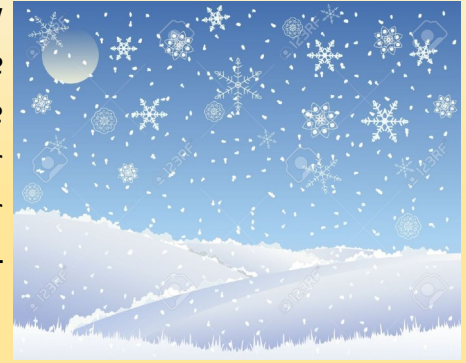
## School Matters!



**Attend Today, Achieve Tomorrow**

## Snow and Ice

As winter approaches, I'd like to remind families of our snow procedures. In the event of heavy snowfall or icy conditions, we will always prioritise the safety of pupils and staff. If school closure becomes necessary, we will notify parents promptly via an Arbor message, email and updates on Facebook. Please ensure your contact details are up to date. Thank you for your support in keeping everyone safe during winter conditions.



## Staff Car Park

It is essential that only vehicles with a valid parking permit use the staff car park during the busy morning drop off from 8.30am. This measure is in place to ensure the health and safety of our children, families and staff. By following this rule, we can maintain a safe and organised environment for everyone. Thank you for your cooperation in helping to keep our school community safe.

## A Friday Challenge...

Each week, I'll share a couple of **Bebras Challenges** which promote children's **computational thinking** and **problem-solving skills**. Why not support your child to complete a challenge each week and you'll be helping them to develop logical and algorithmic thinking skills, as well as introducing them to some new computer science concepts.

### Task Difficulty

The difficulty of the task on each card is indicated by the icon in the bottom right-hand corner.

- = Easy
- = Medium
- ★ = Hard

### Algorithms



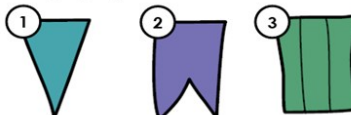
## Flags

5

During a birthday celebration the room is decorated with flags.



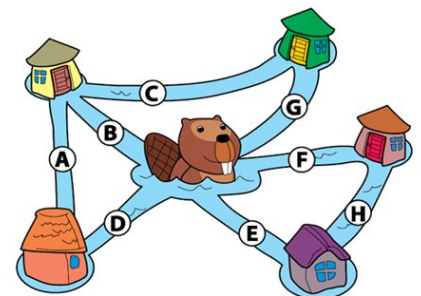
Which flag is going to be added next?



## Swimmer beaver

22

Beaver wants to swim across all rivers but he is only allowed to swim along each river once.



What is the path the Beaver needs to swim?



# Rewards and Celebrations



Little Heroes Assemble

HERE EVERY DAY  
READY  
ON TIME

In the spotlight this week .....

You are warmly invited to our ...

# Christmas Performances

Early Years Performances of 'Baarmy Bethlehem' on  
9th December @ 9.30am and 10<sup>th</sup> December @ 2.15pm

★ Key Stage 1 Performances of 'Lights, Camel, Action' on  
10<sup>th</sup> December @ 9.30am and 11<sup>th</sup> December @ 2.00pm  
or @ 6.00pm.

Let's celebrate the joy of Christmas  
together!

Further information regarding tickets will be sent home shortly.

# WOW Awards



Please make sure you update your calendar with the most up to date information on the key dates for the rest of this Autumn term. Many thanks.

## KEY DATES FOR DECEMBER

<b>PTFA NON UNIFORM DAY</b> - Donations for Christmas Hampers	<b>05/12/25</b>
Christmas Nativity Week	W.B 08/12/25
<b>Dress Rehearsal - PUPILS ONLY</b>	08/12/25
EYFS Morning Performance for Parents (9.30am)	09/12/25
KS1 Morning Performance for Parents (9.30am)	10/12/25
EYFS Afternoon Performance for Parents (2.15pm)	10/12/25
KS1 Afternoon Performance for Parents (2.00pm)	11/12/25
KS1 Evening Performance for Parents (6.00pm)	11/12/25
<b>Year 4 Visit to Woodhouse Academy (9.30am - 11.30am)</b>	<b>12/12/25</b>
Class Christmas Party Week	W.B 15/12/25
Santa visiting Oxhey (Rotary Club)	16/12/25
Christmas Dinner Day & Christmas Jumper Day	17/12/25
Autumn Term Reports Home	17/12/25
KS2 Carol Concert at St. Lawrence Church (Concert for Parents 1:30 - 2:30)	18/12/25
Finish for Christmas	19/12/25

## KEY DATES FOR JANUARY

**SCHOOL OPENS 05/01/26**

Pantomime in School	08/01/26
---------------------	----------



# Notice Board

## Finance & Wellbeing Cafe

3<sup>rd</sup> December 9:30am - 12:30pm  
Staffordshire Moorlands Family Hub  
Albert Street, Biddulph, ST8 6DT

Are you struggling with the cost of living?  
Would you benefit from some support, advice, and signposting to relevant services?  
If so, we are here to support you. Come along and meet:

- Department for Work and Pensions
- Citizens Advice Bureau
- Green Doctor
- Social Prescriber
- Potteries Moneywise
- School Uniform Bank
- Our Household Support Fund Coach

Freebies Available!!

Join us for Tea, Coffee and Mince Pies

## Stay Well Prescription

**FREE** Mental Health Service for young people ages 5-18 years in Staffordshire (upto 25 with SEND or careleavers)

**Scan Me**

**Who can refer?**

- Self Refer
- Parents/Carers
- GP's & Professionals

Call: 01782 418518 option 2 or 3  
Email: staywellcypstaffs@changes.org.uk  
Visit: staffs.staywellcyp.org

# BIDDULPH

29TH NOV

## CHRISTMAS LIGHTS

FREE FUN

FREE SANTA | MARKET | FAIR | FREE ACTIVITIES

FROM 4.30 PM | LIGHTS ON AT 6.00 PM | HIGH STREET, BIDDULPH  
01782 498480 | WWW.BIDDULPH.GOV.UK

SPORTS COACHING GROUP INVITES YOU

# FREE

## CHRISTMAS SPORTS & ACTIVITIES HOLIDAY CLUB

22<sup>ND</sup>, 23<sup>RD</sup>, 24<sup>TH</sup> DECEMBER & 2<sup>ND</sup> JANUARY  
BIDDULPH YOUTH AND COMMUNITY ZONE, ST8 6NE  
10AM - 2PM

HOT LUNCH INCLUDED | SPORTS | CRAFTS | AGES 5-13 YEARS | PART OF THE STAFFORDSHIRE HAF PROGRAM | AVAILABLE FOR THOSE WHO RECEIVE INCOME RELATED MEALS

PAID SPACES AVAILABLE FOR THOSE NOT ELIGIBLE FOR HAF, AT ONLY £15 INCLUDING LUNCH

**HOW TO BOOK:**  
Book via Sports Coaching Group website, Or click **HERE**

01270 449770

## **CFLP School Term and Holiday Dates 2025/2026**

### **Autumn Term 2025**

**INSET DAYS 1 AND 2:** Monday 1st & Tuesday 2nd September 2025 (Staff only)

**Pupils:** Wednesday 3rd September - Friday 24th October

**October Half Term Holiday:** Monday 27th October - Friday 31st October

**INSET DAY 3** Monday 3<sup>rd</sup> November (Staff only)

**Staff and Pupils:** Tuesday 4th November - Friday 19 December

**Christmas Holiday:** Monday 22nd December - Friday 2nd January 2026

### **Spring Term 2026**

**Staff and Pupils:** Monday 5th January 2026 - Friday 13th February

**February Half Term:** Monday 16th February - Friday 20th February

**Pupils:** Monday 23rd February - Friday 27<sup>th</sup> March

**Easter Holiday:** Monday 30th March - Friday 10th April

### **Summer Term 2026**

**Staff and Pupils:** Monday 13th April - Friday 22nd May

**May Bank Holiday - School Closed:** Monday 4th May

**Half term:** Monday 25th May - Friday 29<sup>th</sup> May

**INSET DAY 4:** Monday 1st June (Staff only)

**Pupils:** Tuesday 2nd June - Friday 17<sup>th</sup> July

**INSET DAY 5-** Monday 20th July (Staff only) Taken as Twilights

**Summer Holiday for pupils:** Monday 20th July -Monday 31<sup>st</sup> August 2026

# ATTENDANCE

# WHAT THE NEW RULES MEAN FOR ME

# 1

I'm a single parent of one child and we want to go on holiday for a week.

Your holiday will not be authorised and you must talk to the school before you book anything. Because your child will miss 5 school days you will be given a penalty notice fine. The fine is £160 but if you pay it in 21 days it will be reduced to £80.

# £160



# 2

FOR EVERY CHILD A PENALTY IS GIVEN.



+ £160 + £160 + £160 + £160

**4 children & 1 parent = £640**

Reduced to £320 if paid in 21 days

## IRREGULAR ATTENDANCE

# 10 IN 10

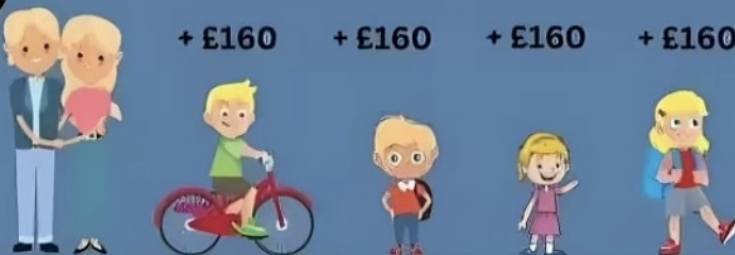
# 5

If your child is absent for 10 or more sessions in 10 weeks and their absences are unauthorised. The school will consider prosecution.

**1** Day = **2** Sessions

# 3

## FOR A FAMILY OF TWO PARENTS



+ £160 + £160 + £160 + £160

**4 children & 2 parents =**

**£1280**

Reduced to £640 if paid in 21 days

If in any period of not more than 3 years, your child has a 2nd and 3rd leave of absence or pattern of irregular attendance...

# 4

### 2ND TIME

**2 parents and**

1 child = £320

2 children = 640

3 children = 960

4 children = 1280

**No discount for early payment**



### 3RD TIME

A penalty notice fine will not be given. Instead, your case will be taken to court.

A magistrate can fine each parent £2500 for each child

**1 parent & 4 children = £10,000**

**2 parents & 4 children = £20,000**