



Newsletter

A message from Mrs Proffitt.....

Dear Families,

This week it's been great to welcome four Biddulph High School work experience students, including some of our past pupils! It has been lovely to see them back at Oxhey and supporting our children so positively. Our small but mighty Enterprise Team, made up of just six pupils and led by Mrs. Blanchard, have been exceptional in raising an incredible £334 for The Gingerbread Family charity. They showed such pride in their achievements, transforming a small starting amount into something truly meaningful that will make a real difference to families over the break – we are so proud of them! Thank you to all our parents and staff who supported the Enterprise Team events – your generosity has made this brilliant achievement possible. Key Stage 1 have also thoroughly enjoyed their visit to Weaver Hall and returned full of enthusiasm, eager to share their learning. I was equally impressed with all pupils during our fire drill this week – they were calm and followed our golden rule of “be safe” perfectly. On Wednesday, I had the pleasure of talking some of our Year 4 children to take part in a sporting festival at James Bateman. They were an absolute credit to Oxhey; demonstrating great team work, resilience and a positive can-do attitude. We are proud of you all! Finally, thank you for supporting our fabulous PTFA today and breaking the rules! What a fantastic way to head into half term and the weather looks promising too! Enjoy.

We'll see you back in school on **Tuesday 2nd June**.

Best wishes from Mrs Proffitt and the Oxhey Team.



Diary Dates

Inset Day (Staff only)
1st June

School Opens for Pupils
2nd June

Yr1 Phonics Screening & Yr4 Multiplication Tables Check
W/C 8th June

PTFA Summer Discos
11th June

Biddulph Schools Bump up Day
18th June

Health & Sports Week
W/C 22nd June

Inflatable Fun Day
22nd June

KS2 Smoothie Bike Activities
22nd June

EYFS Sports Day
23rd June (9:15am-11:00am)

KS1 Sports Day
24th June (9:15am-11:00am)

KS2 Sports Day
25th June (9:15am-11:00am)



Class	Attendance
Little Ladybirds	85%
Sparkly Spiders	86%
Dazzling Dragonflies	95%
Terrific Turtles	98%
Perfect Pandas	87%
Amazing Alligators	92%
Marvellous Meerkats	96%
Outstanding Owls	87%
Fabulous Foxes	99%

Our whole school attendance target is **96.4%**.
This week, our school attendance was **92.13 %**.

SUMMER TERM—KEY DATES

SUMMER 2 June - July (7 weeks)	
INSET DAY	01/06/26
School Opens for Pupils	02/06/26
Alex Foulkes - Author Visit in School	02/06/26
Y1 Phonics Screening and Y4 Multiplication Tables Check	WB 08/06/26
PTFA Summer Disco	11/06/26
Biddulph Schools 'Bump Up Day' - Transition Day	18/06/26
Health and Sports Week	WB 22/06/26
Inflatable Fun Day	22/06/26
KS2 Smoothie Bike Activities	22/06/26
EYFS Sports Day 9:15am -11:00am	23/06/26
KS1 Sports Day 9.15am - 11.00am	24/06/26
KS2 Sports Day 9.15am - 11.00am	25/06/26
PTFA Colour Run	26/06/26
Reserve Inflatable Fun Day	29/06/26
Y4 Residential Visit to Standon Bowers	01/07/26 - 03/07/26
End of Year Annual Reports Out	03/07/26
Meet the Teacher Evening	07/07/26
Cricket Enrichment Day	08/07/26
Year 4 Leaver's Disco	09/07/26
Nursery & Reception Graduation Assembly for Parents (AM and PM)	10/07/26
Year 4 Leavers' Assembly and Awards Evening 5.30pm - 7.30pm X 2 tickets	13/07/26
Year 4 Leavers' Assembly and Family Picnic on the Field 1.30pm - 3.00pm	14/07/26
Create Music - Summer Music Concert 2.45pm - 3.15pm	15/07/26
Last Day - Pupils Finish for Summer - Non-Uniform Day	17/07/26
INSET DAY - SCHOOL CLOSED FOR PUPILS	20/07/26

In the spotlight this week



Advice on Screen Use



Digital screens are a part of modern life, but finding the right balance between screen time and other activities for young children can be tricky. I'm pleased to share the following evidence-informed, helpful guidance from the "Best Start in Life" programme to support you in shaping healthy screen time habits. I hope you find this useful to read, not only for those families with younger children, but as guidance that can support healthy habits as children grow.

What content is better content?

My child has SEND. Is the advice the same for us?

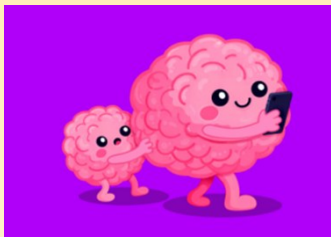
When and where is okay for my child to use screens?

How much screen time should my child have?

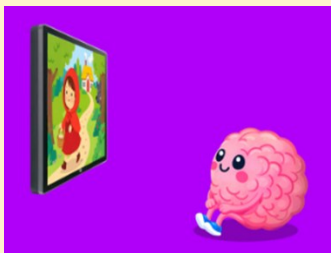
How does my own screen use affect my child?

How does screen time affect my child's development?

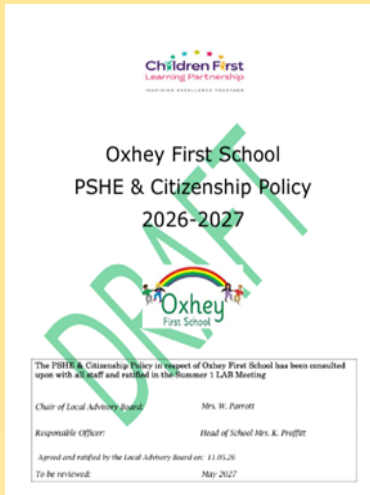
[Baby and toddler screen time guidance - Best Start in Life](#)



The webpage offers clear, evidence-based advice on how much screen time is recommended, the types of content that are most suitable for young children, and how to build healthy digital habits at home. It also explains the importance of balancing screen use with play, interaction and sleep to support children's development. You may find the practical tips and "screen swaps" particularly useful for everyday routines.



I would also encourage parents to read the government's full report on screen use in early childhood, which can be accessed here: [Screen use by children aged under 5](#). This independent, expert-led review brings together the latest research on how screen use can affect young children's development. It highlights that while high-quality, shared screen experiences can support learning, excessive or unsupervised use may impact language, attention, social skills, sleep and physical health. The report emphasises that screen use should complement—not replace—real-world play, interaction and exploration, which remain essential for healthy development in the early years.



PSHE and Citizenship Policy Review and Consultation

Our PSHE and Citizenship Policy has been reviewed. PSHE and Citizenship lessons are taught using the 3D PSHE scheme. This covers all of the statutory requirements for a First School of the Department for Education document entitled 'Relationships and sex education (RSE) and health education 2026' [Relationships and sex education \(RSE\) and health education - GOV.UK](https://www.gov.uk/government/publications/relationships-and-sex-education-rse-and-health-education-2026)

This is a fundamental part of the curriculum and schools must consult with stakeholders to ensure that there is a general consensus on our approaches to our policy. We are asking parents/carers to read the updated policy, which can be found on the curriculum page under PSHE on our school website or click the link below:

[Oxhey DRAFT PSHE & Citizenship Policy 2026](#)

Please email any questions or comments, by Friday 29th May to: office.oxh@cflptrust.co.uk

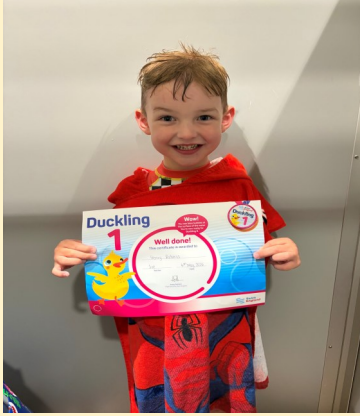


Slow Down! Stay Safe!

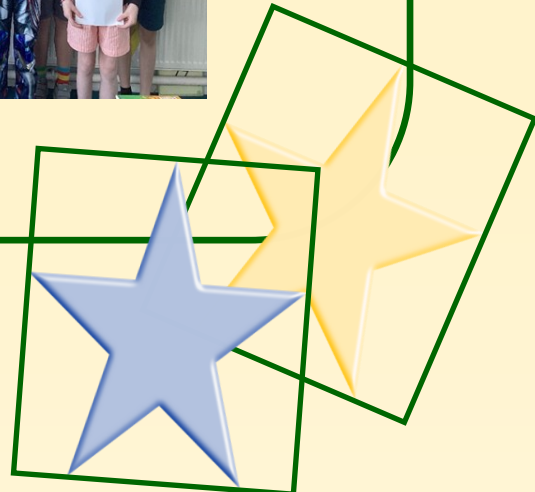
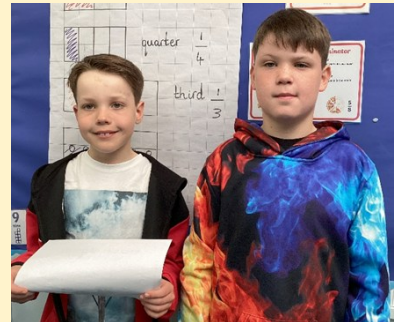
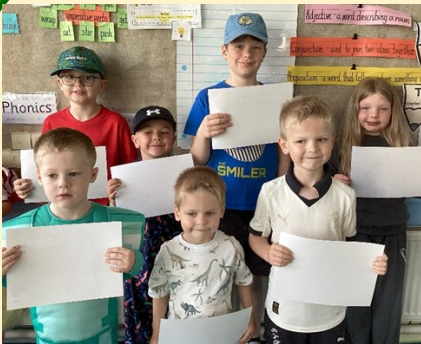
A polite reminder to all parents and visitors to **please drive slowly** along the school drive. There is a 5 mph speed limit in place for a very important reason – to keep our children, families and staff safe at all times.

We kindly ask for your full co-operation in adhering to this limit and helping us maintain a safe environment for everyone in our school community. Thank you.

WOW awards...



Tiger Learners & Pupils of the Week!





Notice Board

May Half Term at Biddulph Library

All activities are FREE

Waste Minimisation Road Show Free drop-in sessions	Friday 22nd May 10.30am-12pm	Activities and simple games that help build awareness around recycling, reuse, and waste reduction
Library Walk	Friday 22nd May 12pm – 2pm	Level - Easy / Moderate Start & Finish – Biddulph Library, Biddulph Library Tunstall Rd, Stoke-on-Trent ST8 6HH Time - Approx. 1.5 Hours Distance – 1.75 - 2 miles (The route is dynamic and may be adapted to meet the requirements of the group).
Elmer Day	Saturday 23rd May	Drop in for lots of free Elmer crafts and a hunt, aimed at children under 7 years. At 2.30pm Elmer and the Gift Storytime and Songs
Green Fingers Club for Green Libraries Month	Tuesday 26th May Children's event 10.30am-12pm Seed and Plant Swap all day.	Plant and seed swap, with story time and some planting and small compostable pots and plant radish or sunflower seeds with the children.
Kids Craft Afternoon	Tuesday 26th May 2pm - 4pm	Make a decorated head band, a pop-up card or folded paper mini story card. Suitable for children up to 11 years old. This is a free event but please book.
Lego Club	Wednesday 27th and Thursday 28th 10am-12pm	Join us for a Children's LEGO Club events at Biddulph Library! Kids can unleash their creativity and build amazing LEGO creations. Suitable for children aged 3+.
Wonder of Waste	Saturday 30th May 1pm-3.30pm	Imagination crafting with recyclable material - all the children need to bring are their imaginations This is a free drop-in event that is being run by Veolia. No booking is required.

If you need any more information please contact biddulph library via email - biddulph.library@staffordshire.gov.uk

The WONDER OF WASTE
Recycling Craft Workshop
Biddulph Library
Saturday 30th May 1pm-3.30pm
Free drop-in event for kids
Imagination crafting with recyclable material - all the children need to bring are their imaginations.
Plus VR tours of the Energy Recovery Facility showing where the general waste goes.

YOUR LIBRARY Staffordshire County Council
GO ALL IN. National Year of Reading 2026
VEOLIA

KIDS CRAFT
26th May 2:00pm till 4:00pm.
At Biddulph Library
Either make a decorated head band, a pop up card or folded paper mini story card.
FREE
But booking essential
Age 3 - 11
Contact Biddulph Library
biddulph.library@staffordshire.gov.uk
THE FESTIVAL OF BRILLIANT

LEGO CLUB
DROP IN SESSION
WEDNESDAY 27TH MAY & THURSDAY 28TH
BIDDULPH LIBRARY
10AM-12NOON
For more information email biddulph.library@staffordshire.gov.uk or call on 01782 485491

Green Fingers Club
SEED AND PLANT SWAP . STORY . PLANTING
Biddulph Library
26th May
SEED AND PLANT SWAP ALL DAY
STORY STARTS AT 10:30AM
For all ages
Booking Essential
YOUR LIBRARY Staffordshire County Council
For more information contact us at biddulph.library@staffordshire.gov.uk

Elmer Day
at Biddulph Library
Saturday 23rd May 2026
Join us for a story at 2:30pm and a craft available all day

YOUR LIBRARY Staffordshire County Council
ELMER DAY
GO ALL IN. National Year of Reading 2026



MAY-HEM HALF TERM

HOLIDAY CLUBS

KINGSFIELD FIRST SCHOOL Gunn Street, Biddulph, ST8 6AY

We are excited to welcome you to our action-packed holiday club from **May 26-29**. Our program of sports, games and special events give every child an unforgettable experience living long in the memory.

NEW EXTENDED FULL DAY!
WE'RE GIVING YOU AN EXTRA 30 MINUTES!

FULL DAY **08:30-15:30** **£23.50**

MULTI-SPORTS • SPECIAL EVENTS • GAMES
ARTS & CRAFTS • INFLATABLES • COMPETITIONS

Half Day (£15.00) | Wrap-Around (from £4.00)

AM **08:30-12:00** PM **12:00-15:30** AM **08:00-08:30** PM **15:30-17:00**

SPECIAL EVENTS

- Glow Dodgeball
- Lasertag
- World Cup Day
- Scout Skills
- Mini-Medics
- Bring-a-Bike
- Circus Skills
- Wet 'n' Wild
- Talent Show

All of these scheduled activities may be subject to change

SIBLING DISCOUNT
20% off for all siblings!


We accept payment of childcare vouchers from most schemes. Bookings subject to a £3.00 admin fee.

OFSTED
Registered (at selected venues)




Call: 01782 366332 Website: asmports.co.uk

SEND & Wellbeing Coffee Afternoon



A great opportunity to meet and catch up with other parents, check in with staff and discuss SEND & Wellbeing Support!

SPECIAL GUESTS!




Autism Inclusion Team

Open to all parents of all year groups!
No need to book, just show up!
Open to Prospective Parents too!

- Worry management / Anxiety
- Panic management
- Low Mood
- Sleep
- Problems solving
- Work with children with a diagnosis or working diagnosis of Autism.
- Offer specific support and advice to staff, children and parents in educational settings

Wednesday 3rd June
1:30pm to 3:30pm at
James Bateman Middle School's Canteen



STAFFS MOORLANDS HUB, ALBERT STREET, BIDDULPH, ST8 6DT



YOUTH HUB FUN DAY IS LANDING

MAY 27TH 3-5PM



Biddulph Limerick Trail

23rd May - 27th June

Explore the town and see how many limericks you can find—then answer the questions along the way! Pick up your trail question sheet from Biddulph Town Hall or Biddulph Library.

Want a chance to win free family tickets to the Festival of Brilliant or the New Vic Theatre?

Complete the trail and return your finished question sheet to Biddulph Library by 27 June 2026.

THE FESTIVAL OF BRILLIANT
10-11th July '26

Biddulph Old Hall



Partners: OUTSIDE, THE ISLANDS OF BRILLIANT, YOUR BRILLIANT, YOUR FAMILY HUB, YOUR VOUCHER GROUP, SUPPORT STAFFS FOREVER HERE, THE READING AGENCY, BookTrust, GO ALL IN, Staffordshire County Council, Staffordshire Virtual School, Staffordshire Moorlands Academy, Staffordshire Moorlands Primary School, ARTS COUNCIL ENGLAND, Community Foundation Staffordshire

BioBlitz

Free Event Drop in

Tuesday 27th May 2026
10:00am - 12:00pm
At All Saints' Church Sandon ST18 0DB

- Join Staffordshire Wildlife Trust's rangers to take part in a BioBlitz in the grounds of All Saints' Church Sandon.
- Find and identify as many species as possible and record your sightings.
- Take part in bug hunts, bird watching and investigate plants and trees
- Have a go at tree bingo and clay creature modelling
- For further details see www.sandonallsaints.com



All Saints Sandon
www.sandonallsaints.com

Staffordshire Wildlife Trust

@allsaintssandon

OPEN FARM Sunday

A day on the farm for all ages!

A relaxed, family-friendly day in the countryside



Join us for a fantastic day out with plenty to see and do!

- Meet the animals
- Shearing demonstration
- Midlands Pedigree Racing Club dog racing demo & "have-a-go"
- Bushcraft activities
- Plant sales from our Farm to Fork programme
- Meat & egg sales
- Tombsola
- Homemade refreshments served all day

INTAKE FARM, IPSTONES, ST10 2JT **SUNDAY 7TH JUNE 10AM - 6PM**

Book your tickets here! <https://www.trybooking.com/uk/GJMT>

Cash only on the day

HELPING US SUPPORT **simpli.life**

Bring a little cash along your way, it helps our farm give more away.

WONDER KIDS SEN STAY AND PLAY

Come and join us for our Stay and Play for children with special educational needs and disabilities to enjoy with their parents/carers.

MAY HALF TERM 0-7 YEARS

TUESDAY 26th MAY 1:30PM - 3:30PM

FOR WONDER KIDS AGED 0-7 YEARS FREE

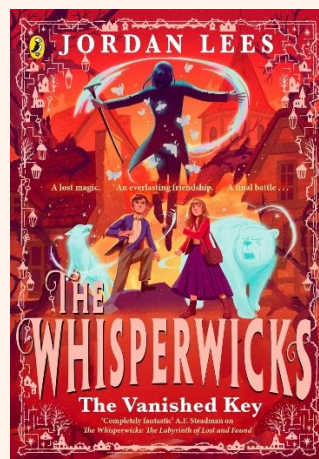
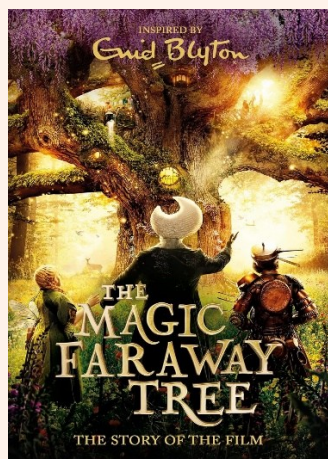
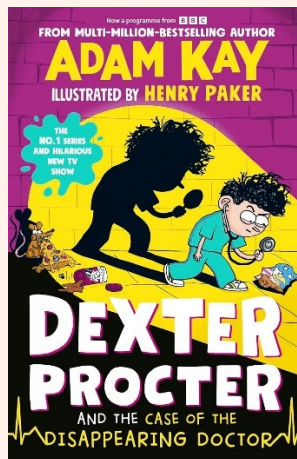
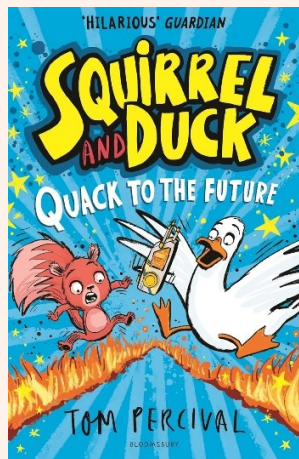
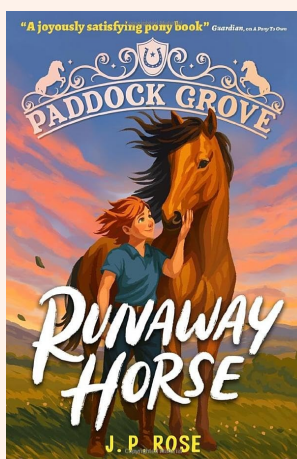
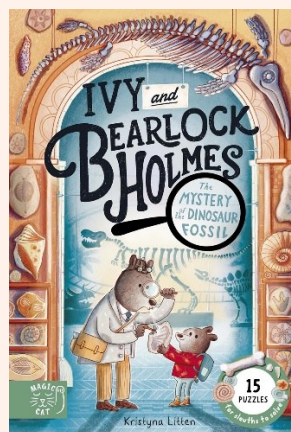
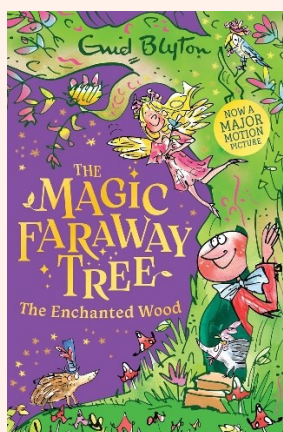
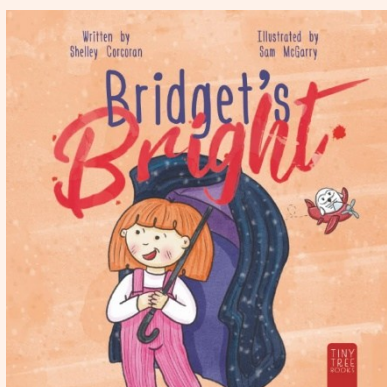
Staffordshire Moorlands Family Hub, Albert Street, Biddulph, ST8 6DT

For information call our friendly team on 01782 297970



What's new in Key Stage 1 & 2?!..

Here are our termly book recommendations!



Keep an eye out for news about..
this year's
Summer Reading Challenge!



Summer 2026!

Families' Health and Wellbeing



Midlands Partnership University
NHS Foundation Trust

School Nurse Community drop in



For parents/
carers of 5-19's
and young
people not in
education

**2nd
Friday
of the month**
1.15pm – 4.00pm

The School Nurse
is here to help your child feel healthy, happy
and safe during their school years and to get
the best from their
education. If you
have any concerns
about their health
call in for a chat at →

Staffordshire Moorlands Family Hub

Albert Street

Biddulph

Staffordshire

ST8 6DT

01782 297970

We provide a confidential and friendly service

www.mpft.nhs.uk/services/health-visiting-and-school-nursing

CFLP School Term and Holiday Dates 2025/2026

Autumn Term 2025

INSET DAYS 1 AND 2: Monday 1st & Tuesday 2nd September 2025 (Staff only)

Pupils: Wednesday 3rd September - Friday 24th October

October Half Term Holiday: Monday 27th October - Friday 31st October

INSET DAY 3 Monday 3rd November (Staff only)

Staff and Pupils: Tuesday 4th November - Friday 19 December

Christmas Holiday: Monday 22nd December - Friday 2nd January 2026

Spring Term 2026

Staff and Pupils: Monday 5th January 2026 - Friday 13th February

February Half Term: Monday 16th February - Friday 20th February

Pupils: Monday 23rd February - Friday 27th March

Easter Holiday: Monday 30th March - Friday 10th April

Summer Term 2026

Staff and Pupils: Monday 13th April - Friday 22nd May

May Bank Holiday - School Closed: Monday 4th May

Half term: Monday 25th May - Friday 29th May

INSET DAY 4: Monday 1st June (Staff only)

Pupils: Tuesday 2nd June - Friday 17th July

INSET DAY 5- Monday 20th July (Staff only) Taken as Twilights

Summer Holiday for pupils: Monday 20th July -Monday 31st August 2026

CFLP School Term and Holiday Dates 2026/2027

Autumn Term 2026

INSET DAYS 1: Tuesday 1st September 2026 (Staff only)

Pupils: Wednesday 2nd September - Friday 23rd October

October Half Term Holiday: Monday 26th October - Friday 30th October

INSET DAY 2 Monday 2nd November (Staff only)

Staff and Pupils: Tuesday 3rd November - Friday 18th December

Christmas Holiday: Monday 21st December - Friday 1st January 2027

Spring Term 2027

Staff and Pupils: Monday 4th January 2027 - Friday 12th February

February Half Term: Monday 15th February - Friday 19th February

INSET DAY 3 Monday 22nd February (Staff only)

Pupils: Tuesday 23rd February - Thursday 25th March

Easter Holiday: Monday 29th March - Friday 9th April

Summer Term 2027

Staff and Pupils: Monday 12th April - Friday 28th May

May Bank Holiday - School Closed: Monday 3rd May

Half term: Monday 31st May - Friday 4th June

INSET DAY 4: Monday 7th June (Staff only)

Pupils: Tuesday 8th June - Tuesday 20th July

INSET DAY 5- Wednesday 21st July (Staff only)

Summer Holiday for pupils: Wednesday 21st July - Wednesday 1st September 2027

ATTENDANCE

WHAT THE NEW RULES MEAN FOR ME

1

I'm a single parent of one child and we want to go on holiday for a week.

Your holiday will not be authorised and you must talk to the school before you book anything. Because your child will miss 5 school days you will be given a penalty notice fine. The fine is £160 but if you pay it in 21 days it will be reduced to £80.

£160



2

FOR EVERY CHILD A PENALTY IS GIVEN.



+ £160 + £160 + £160 + £160

4 children & 1 parent = £640

Reduced to £320 if paid in 21 days

IRREGULAR ATTENDANCE

10 IN 10

5

If your child is absent for 10 or more sessions in 10 weeks and their absences are unauthorised. The school will consider prosecution.

1 Day = **2** Sessions

3

FOR A FAMILY OF TWO PARENTS



+ £160 + £160 + £160 + £160

4 children & 2 parents =

£1280

Reduced to £640 if paid in 21 days

If in any period of not more than 3 years, your child has a 2nd and 3rd leave of absence or pattern of irregular attendance...

4

2ND TIME

2 parents and

1 child = £320

2 children = 640

3 children = 960

4 children = 1280

No discount for early payment



3RD TIME

A penalty notice fine will not be given. Instead, your case will be taken to court.

A magistrate can fine each parent £2500 for each child

1 parent & 4 children = £10,000

2 parents & 4 children = £20,000